

## Detailed Product Description

### Electric Distribution Valve

Bernard electric actuator

Small volume, light weight, low resistance

CE certified



**Electric distribution valve** is widely used in power material transmission .It controls the flow direction by the position adjustment of valve plug. This valve consists of four parts: electric actuator, body, arcuat valve plate and the air charging system in the bottom.

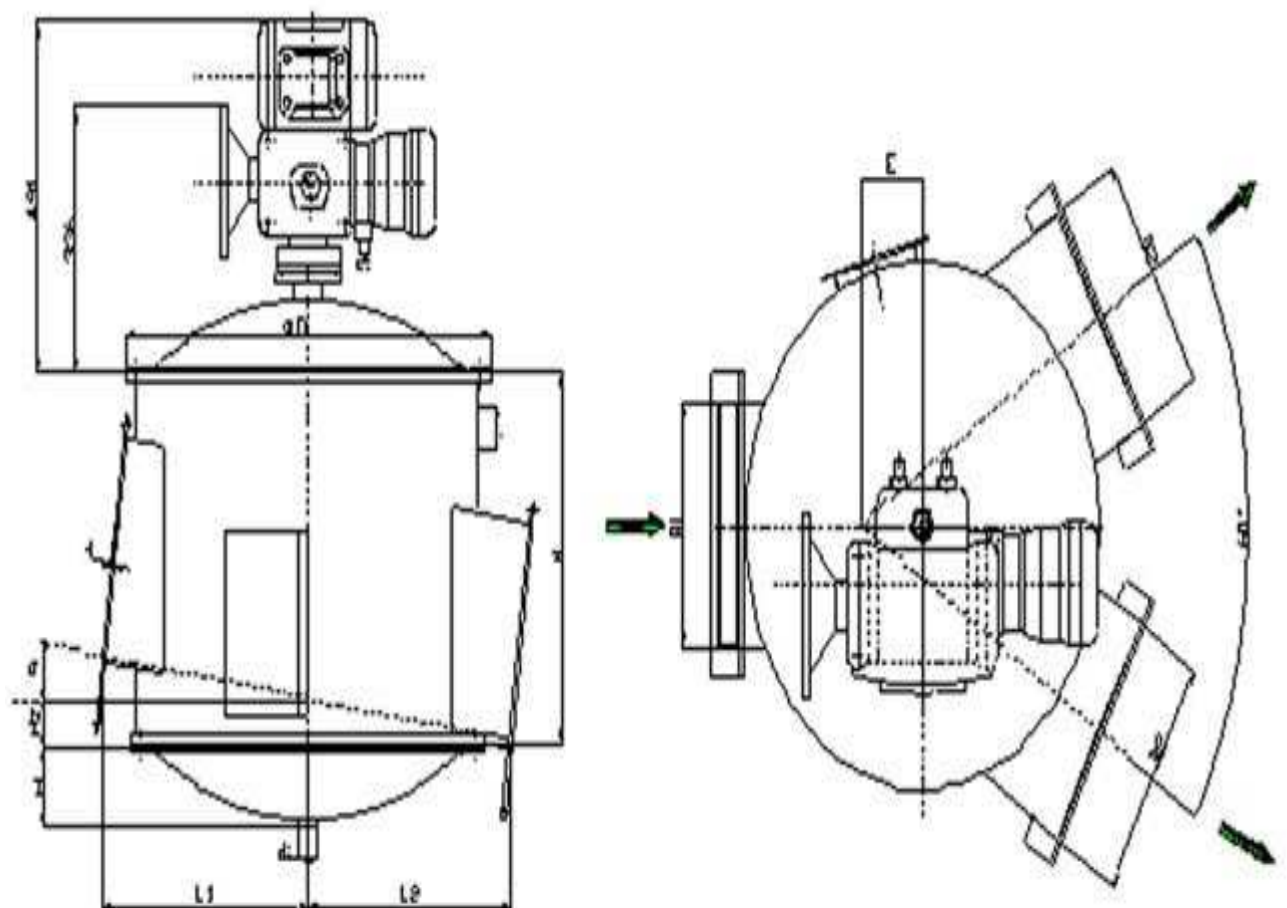
**Weld assembly of high grade steel, small volume, light weight, low resistance**

**Bernard electric actuator driving, remote control available**

**High sealing, no leaking**

Easy installation, low **maintenance**

### **Outline Dimension Drawing**



| SIZEΦD (mm) | B1(mm) | B2(mm) | E(mm) | H(mm) | di(mm) | h(mm) | Hz(mm) | α° |
|-------------|--------|--------|-------|-------|--------|-------|--------|----|
| 500         | 300    | 300    | 100   | 550   | RP11/2 | 136   | 51     | 8  |
| 830         | 400    | 400    | 150   | 660   | RP11/2 | 115   | 71     | 8  |
| 1050        | 500    | 500    | 200   | 715   | RP2    | 160   | 107    | 8  |

## Technical Parameters

|                            |      |      |      |
|----------------------------|------|------|------|
| Nominal Diameter (mm)      | 530  | 830  | 1050 |
| Max Flow (t/h)             | 300  | 500  | 630  |
| Installation Angle (°)     | 8    | 8    | 8    |
| Power (KW)                 | 0.03 | 0.06 | 0.1  |
| Max Torque (Nm)            | 1000 | 2000 | 2000 |
| Input & output signal (mA) | 4~20 |      |      |

**HENT** can offer you the **best cost performance** electric distribution valve.